

KEITH

301 East Atlantic Blvd.
Pompano Beach, FL 33060
PH: (954) 788-3400

Florida Engineering Business License: CA7928
Florida Surveyor and Mapper Business License: LB6860
Florida Landscape Architecture Business License: LC26000457

REVISIONS		
NO.	DESCRIPTION	DATE

**PRELIMINARY PLAN
NOT FOR CONSTRUCTION**

THESE PLANS ARE NOT FULLY PERMITTED
AND ARE SUBJECT TO REVISIONS MADE
DURING THE PERMITTING PROCESS.

ISSUE DATE: 01/25/22

DESIGNED BY: JW

DRAWN BY: FA/NW

CHECKED BY: TD

BID-CONTRACT:

This item has been
digitally
signed and sealed
by Thomas F.
Donahue, P.E. on
the date below
using a Digital
Signature.

THOMAS F. DONAHUE
No. 60529
L
STATE OF
FLORIDA
PROFESSIONAL ENGINEER

Printed copies
of this document
are not considered
signed and sealed
and the signature
must be verified on any
electronic copies:
2022.05.12 10:25:40-04'00"

THOMAS F. DONAHUE, P.E.
FLORIDA REG. NO. 60529
(FOR THE FIRM)

CLIENT

**US GATEWAY
INVESTMENTS LLC**

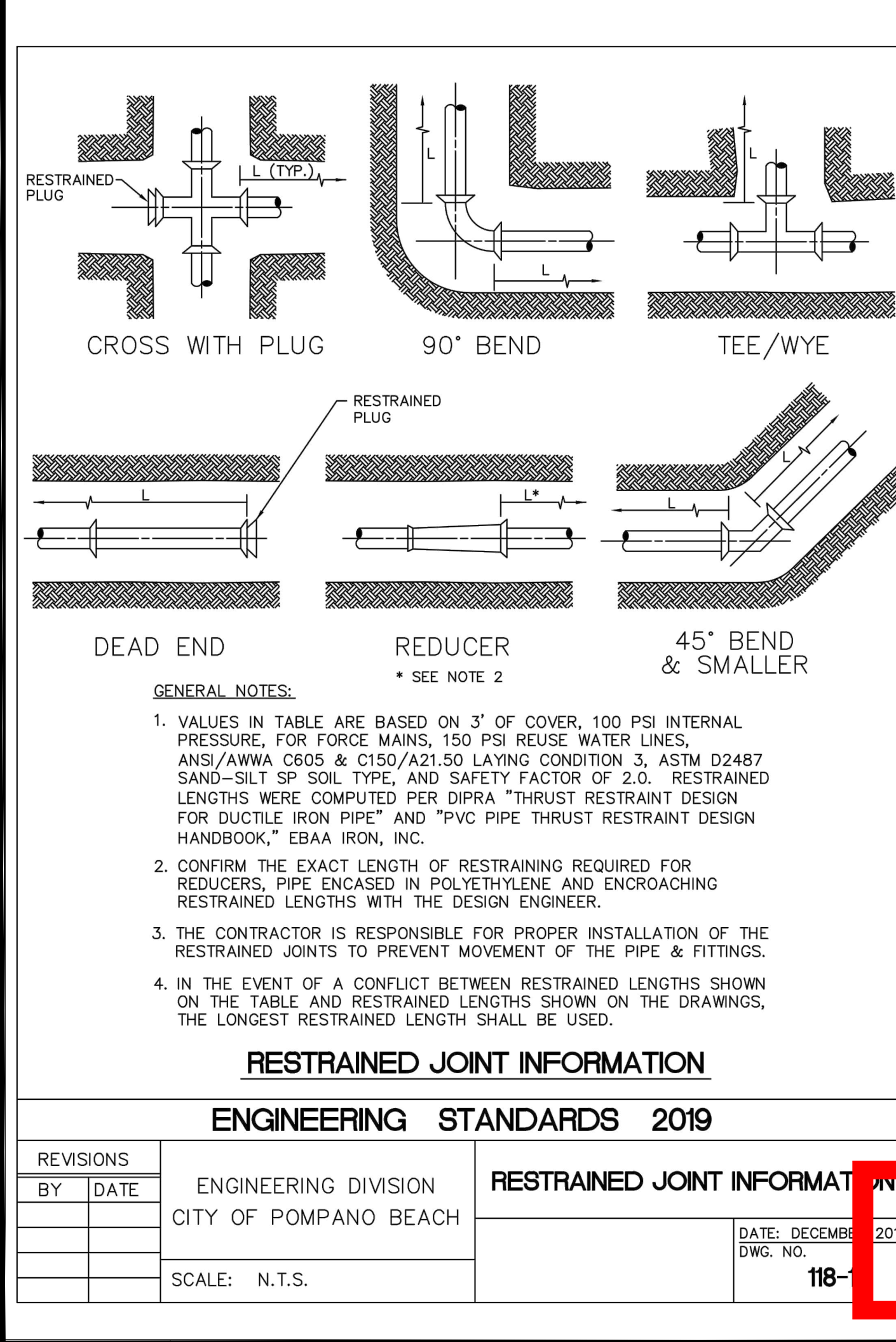
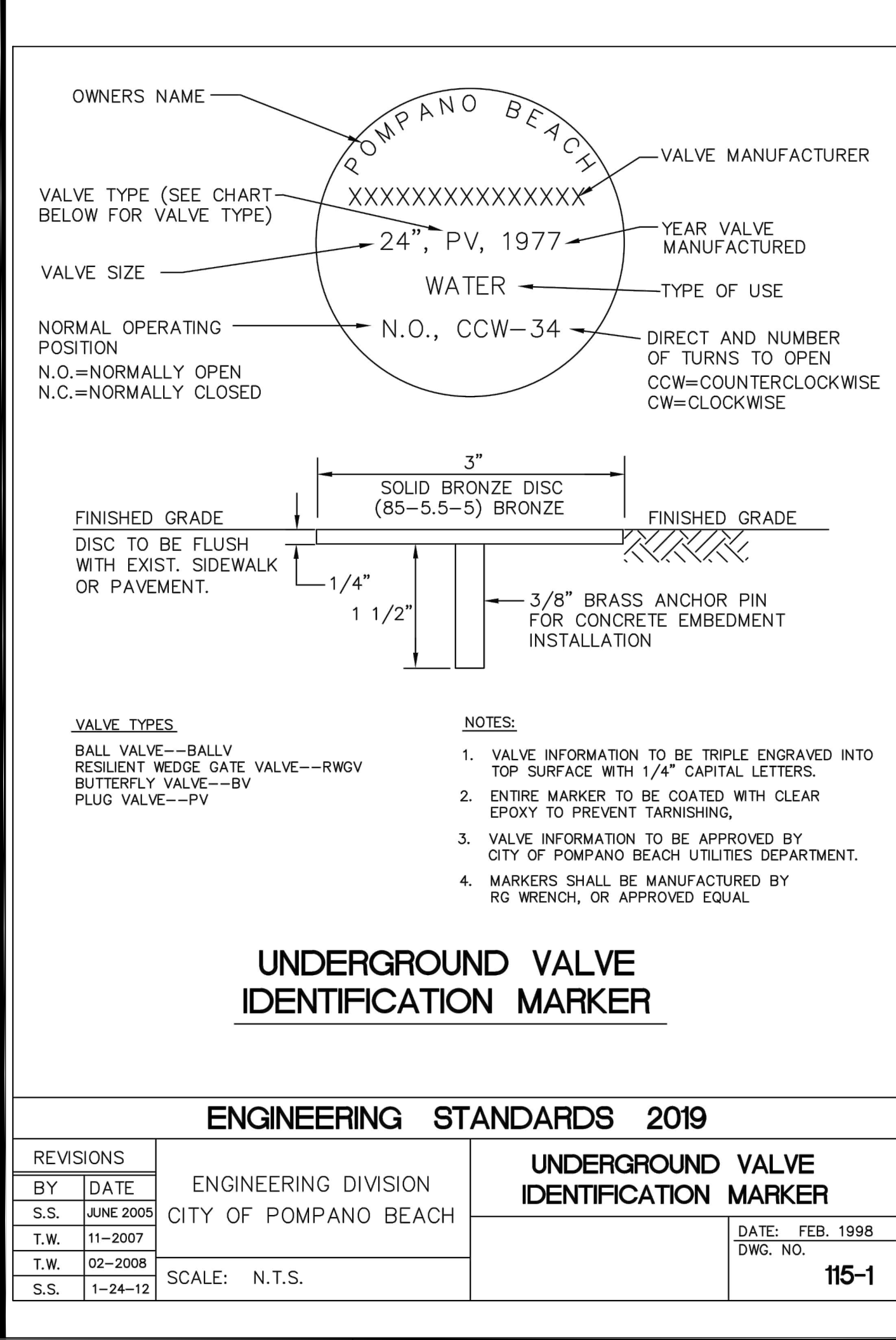
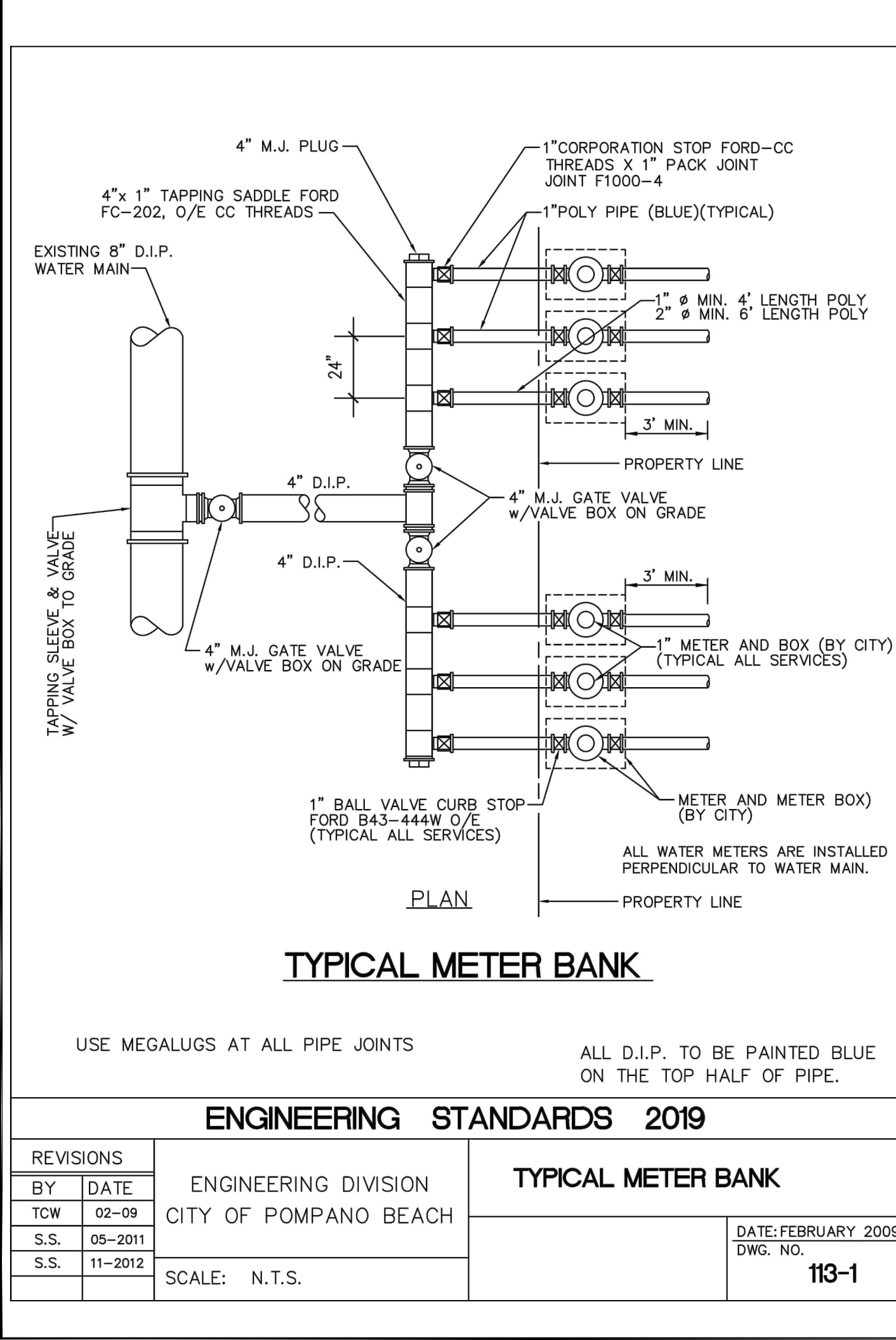
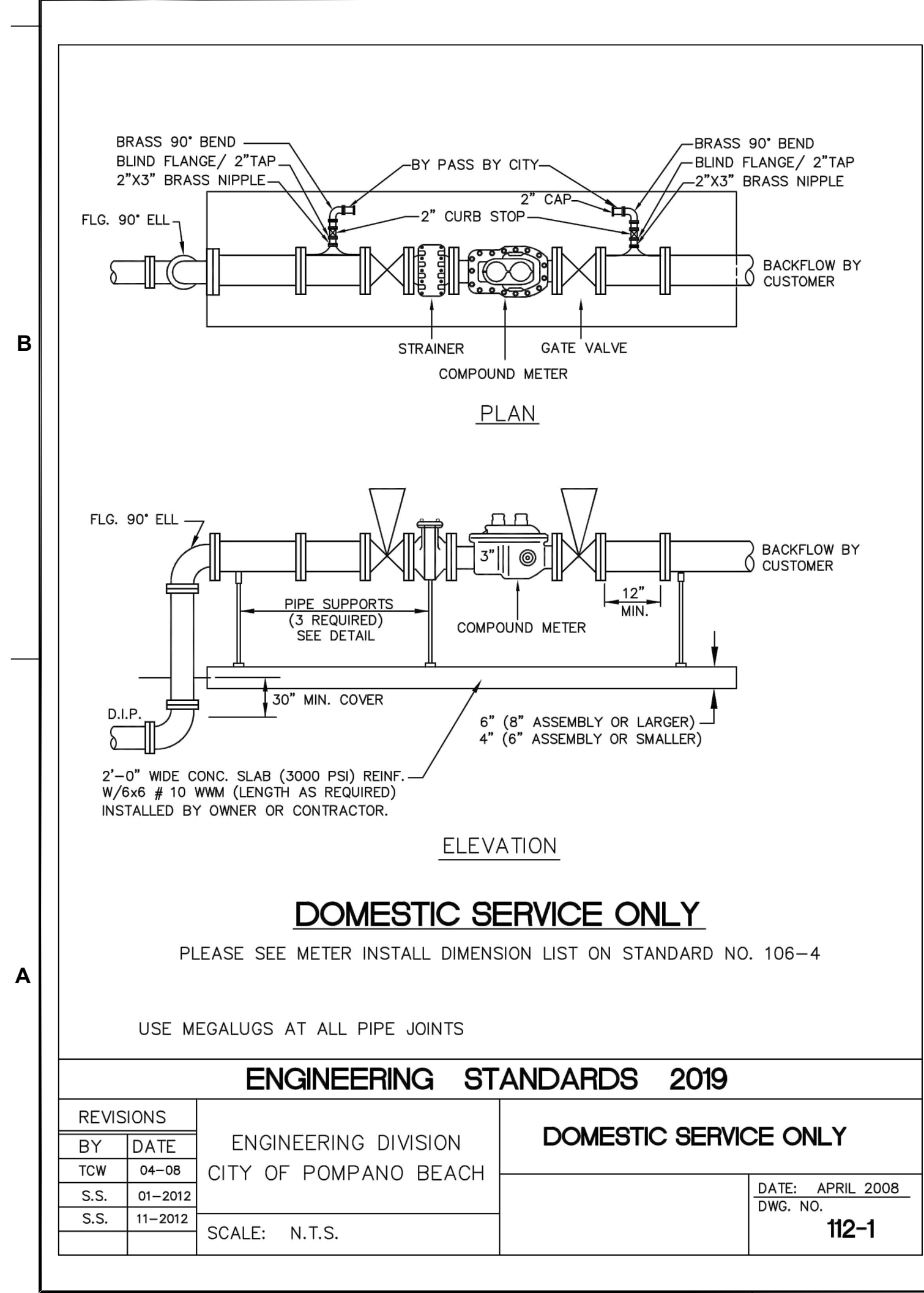
PROJECT

**GATEWAY LUXURY
APARTMENTS
950 N. Powerline Road
Pompano Beach, FL**

SHEET TITLE

**WATER AND SEWER
DETAILS**

STATUS: PRELIMINARY



PROJECT

**GATEWAY LUXURY
APARTMENTS
950 N. Powerline Road
Pompano Beach, FL**

SHEET TITLE

**WATER AND SEWER
DETAILS**

STATUS: PRELIMINARY

SHET
NUMBER
PROJECT
NUMBER

CU 502

269700

PZ22-12000008
6/15/2022